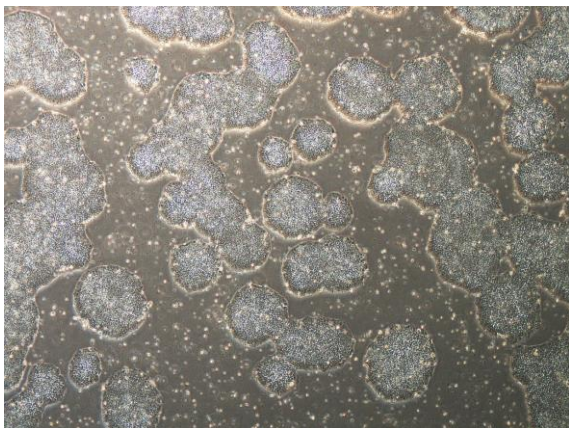
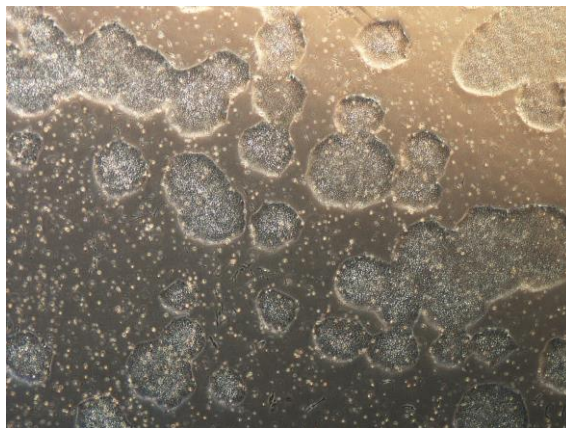


【 CiRA-j-1613 】 Morphology of iPSC colonies

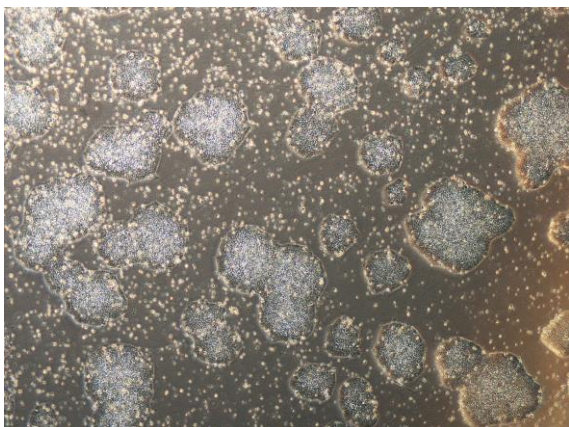
CiRA-j-1613-A: passage-3



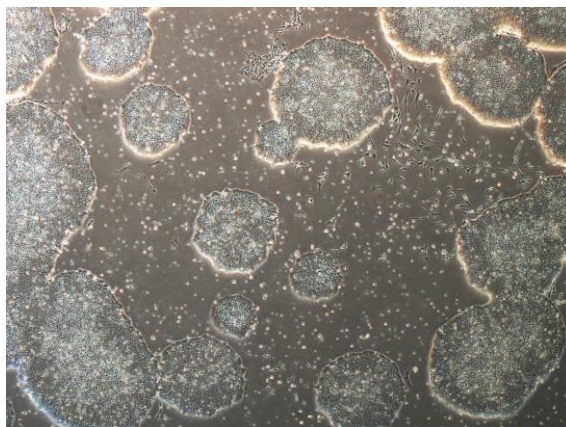
CiRA-j-1613-B: passage-3



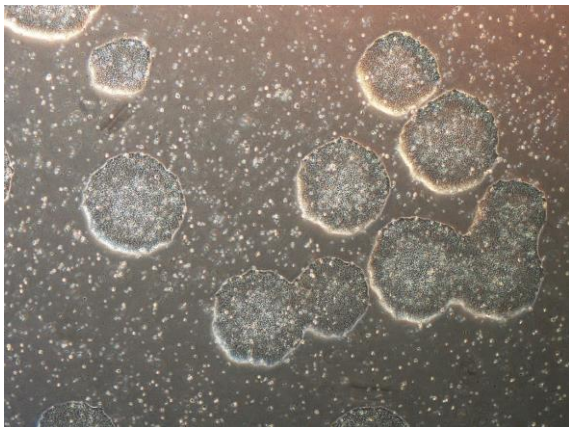
CiRA-j-1613-C: passage-3



CiRA-j-1613-D: passage-3



CiRA-j-1613-E: passage-3



CiRA-j-1613-F: passage-3



(All images were captured at 4x magnification)